

Polypropylene Guinea Pig Cage

These cages are made of two parts, one of a P.P. tray and top grill made of S.S. 304 material.

P.P. TRAY

P.P. tray is made of autoclavable* food grade P.P. material with dimensions of 650x500x215mm and thickness of 5mm±0.5mm

Grill is made of mesh of AISI non magnetic alkaline and chemical resistant 304 quality stainless steel wire of 2.5mm welded on 5mm S.S. rod frame with a gap of 8mm between wires. Grill has a provision for fixing water bottle and keeping food pellets. Grill has two hooks with rollers of brass material for fixing grill to the top of P.P. cage body. Grill is also fitted with tag holder for fixing tag and handle from top side for ease of lifting

WATER BOTTLE:

Made of autoclavable food grade P.P. material of capacity 650ml with S.S. nozzle

FOOD HOPPER

J shaped food hopper made of S.S. 304 material is supplied with a cage.

FLOOR SPACE

2288cm²

OVERALL SIZE

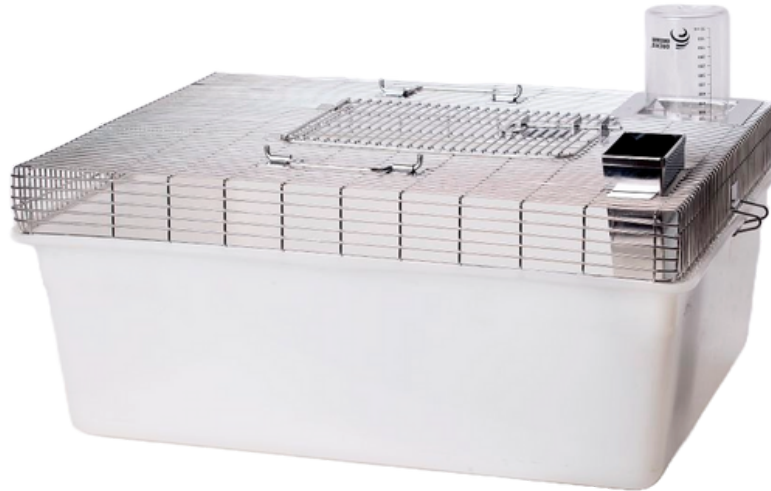
650mm (L) x 500 mm (W) x 280 mm (H)

MODEL GPS-PP-01



MODEL GPS-PP-02 (TOP DOOR)

This type of cage has a door on the top side for animal removal with a lock and two handles



ORDERING INFORMATION

Product	Model	Accessories Supplied
Guinea Pig Cage P.P.	GPS-PP-01	P.P. Tray, S.S. Top grill, Water bottle, food hopper
Guinea Pig Cage P.P. Top lid	GPS-PP-02	

*Autoclavable at 121°C temperature and pressure 15 LB/ Sq inch for 15 minutes.

TROLLEY OR RACK FOR P.P. GUINEA PIG CAGES

Sliding type rack for holding P.P. guinea pig cages

MOC: AISI 304 quality S.S. square pipe of Size 30mm x 30mm & stainless steel angle.

Movable on 4 No. of Polyurethane swivel castor wheels 2 with brakes.

The entire rack will be provided with stoppers on the backside of the angles to prevent cage falling from the back.

All the joints will be welded with argon arc welding with glossy finish

Racks are supplied in ready to assemble parts for ease of transportation and packing.



ORDERING INFORMATION

Model	Number of shelves	Number of cages/shelf	Total cages/trolley
GPS-PP-T-9	3	3	9
GPS-PP-T-12	3	4	12
GPS-PP-T-16	4	4	16



Orchid Scientific & Innovative India Pvt. Ltd.

📍 B-59, M.I.D.C., Ambad, Nashik - 422010, India.

☎ +91253-2387600, 2972525

✉ office@orchidscientific.com, exports@orchidscientific.com

🌐 www.orchidscientific.com

